

Weldcraft® A-150 Series

Formerly WP-17 Series

Hand-Held Air-Cooled
TIG Welding Torches 

Quick Specs

Models

A-150	A-150 Flex Redhead™
A-150 Valve	A-150 Flex Valve Redhead™
A-150 Flex	A-150 Positive Stop Handle
A-150 Flex Valve	A-150 Valve Positive Stop Handle

Applications

Fabrication
Maintenance and Repair
Aerospace
Food and Beverage Industry
Metal Art
Petro/Chemical
Shipboard Installation/Repair

Rated Output

DC: 150 A, AC: 115 A

Duty Cycle 60%

Electrode Range

.020–1/8 in. (0.5–3.2 mm)

A-150 Series TIG Torches

Formerly known as the WP-17 Series, the A-150 Series is comprised of an assortment of versatile and innovative air-cooled torches designed for maximum operator comfort. The A-150 Series torches are a cost-effective alternative to complex water-cooled systems that can be used in a variety of applications.

Diamond Grip™ head design (A-150 and A-150 Valve) has ergonomic contact points for thumb and fingers. Provides a more comfortable grip and reduces operator fatigue.

Improve control and comfort with the A-150 Flex and the flexible neck that allows access into hard-to-reach areas.

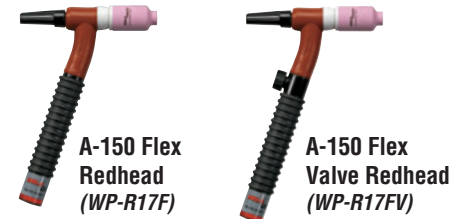
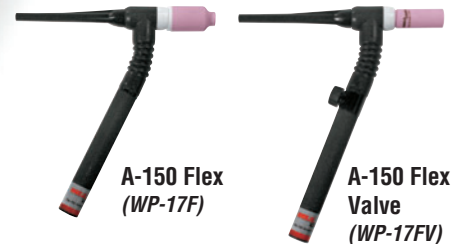
Maximum versatility. Utilize the Redhead Series torches in a variety of welding applications without adding expenses.

Ribbed handle and torch design provide cool operation and maximum operator comfort while reducing downtime caused by operator fatigue.

Utilize existing parts. Replacement parts are easy to find. The A-150 Series uses Weldcraft 10N series consumables.

Available with 12.5- or 25-foot, single- or heavy-duty two-piece cable assembly determined by the compatibility of the power source. Heavy-duty cable assembly allows use of a larger conductor for the power cable which simplifies repair and replacement making it ideal for field applications.

Additional Torch Models



Note: Torches delivered may vary slightly from images shown.



Torch is warranted for 1 year parts.



Miller Electric Mfg. Co.

An ITW Company
1635 West Spencer Street
P.O. Box 1079
Appleton, WI 54912-1079 USA

Equipment Sales US and Canada

Phone: 866-931-9730
FAX: 800-637-2315
International Phone: 920-735-4554
International FAX: 920-735-4125

Torch Packages

Models		1-Piece Power Cable Standard Rubber		1-Piece Power Cable Mono-Flex™		2-Piece Power Cable Rubber	
Old Model	New Name	12.5 ft. (3.8 m)	25 ft. (7.6 m)	12.5 ft. (3.8 m)	25 ft. (7.6 m)	12.5 ft. (3.8 m)	25 ft. (7.6 m)
WP-17	A-150	WP-17-12-R	WP-17-25-R	WP-17-12-MF	WP-17-25-MF	WP-17-12-2	WP-17-25-2
WP-17V	A-150 Valve	WP-17V-12-R	WP-17V-25-R	—	WP-17V-25-MF	WP-17V-12-2	WP-17V-25-2
WP-17F	A-150 Flex	WP-17F-12-R	WP-17F-25-R	—	—	WP-17F-12-2	WP-17F-25-2
WP-17FV	A-150 Flex Valve	WP-17FV-12-R	WP-17FV-25-R	—	—	WP-17FV-12-2	WP-17FV-25-2
WP-R17FV	A-150 Flex Valve Redhead™	WP-R17FV-12-R	WP-R17FV-25-R	—	—	—	—
WP-17-PSH	A-150 PSH	—	WP-17-25-R-PSH	—	—	WP-17-12-2-PSH	—
WP-17V-PSH	A-150 Valve PSH	WP-17V-12-R-PSH	WP-17V-25-R-PSH	—	—	—	—

V = Valve F = Flex FV = Flex Valve PSH = Positive Stop Handle (threaded handle)
 Torch packages include torch body, handle, power cable and long back cap.

Connectors

1-Piece Power Cable Connectors



194 722
50-mm Dinse-style gas thru for one-piece air-cooled torch.



195 378
50-mm Dinse-style for one-piece air-cooled torch.



105 257
Power cable adapter for one-piece air-cooled torch.



195 234
25-mm (small) Dinse-style gas thru one-piece air-cooled torch.

2-Piece Power Cable Connector

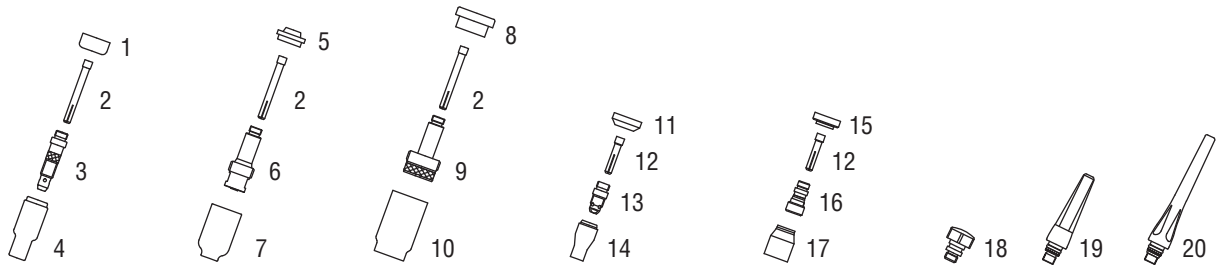


129 527
50-mm Dinse-style for two-piece cable air-cooled torch.

Machines	Connection Type	1-Piece Power Cable Connector	2-Piece Power Cable Connector
TIG Machines			
Syncrowave® 200/210	50-mm Dinse, Gas Thru	194 722	129 527*
Syncrowave® 250 DX/350 DX (Dinse)	50-mm Dinse	195 378	129 527
Syncrowave® 250 DX/350 DX (Stud)	1/2-in. Stud	105 257	N/A
Maxstar® 150 STL/STH	25-mm Dinse, Gas Thru	195 234	127 836*
Dynasty® 200/280/350, Maxstar® 200/280/350	50-mm Dinse	195 378	129 527
Multiprocess Machines			
Multimatic™ 200	25-mm Dinse, Gas Thru	195 234	127 836*
Dimension™ 302/452/NT 450/652	1/2-in. Stud	105 257	N/A
PipeWorx	1/2-in. Stud	105 257	N/A
XMT® 304/350	50-mm Dinse	195 378	129 527
XMT® 450	1/2-in. Stud	105 257	N/A
Engine-Driven Machines			
Most Big Blue®, Trailblazer®, Bobcat™, Blue Star® and Wildcat® models	1/2-in. Stud	105 257	N/A
Big Blue® 450 Duo CST	50-mm Dinse	195 378	129 527
General Reference			
	25-mm Dinse, Gas Thru	195 234	N/A
	50-mm Dinse	195 378	129 527
	50-mm Dinse, Gas Thru	194 722	N/A
	1/2-in. Stud	105 257	N/A
Other Adapter			
	Stud to Dinse Adapter	232 728	

*Two-piece Power Cable Connector is not gas thru.

Consumables (Refer to Owner's Manual for additional replacement parts.)



Non-Gas Lens

Electrode Size — inch (mm)	.020 (0.5)	.040 (1.0)	1/16 (1.6)	3/32 (2.4)	1/8 (3.2)			
1 Insulator (required)	18CG	18CG	18CG	18CG	18CG			
2 Collet	10N21	10N22	10N23	10N24	10N25			
3 Collet Body	10N29	10N30	10N31	10N32	10N28			
Nozzle Size — size # (inch)	4 (1/4)	5 (5/16)	6 (3/8)	7 (7/16)	8 (1/2)	10 (5/8)	12 (3/4)	Short
4 Alumina	10N50	10N49	10N48	10N47	10N46	10N45	10N44	—
* Long Alumina	—	10N49L	10N48L	10N47L	—	—	—	—
* Lava	105Z43	105Z42	105Z44	105Z45	08N78	08N79	08N80	—
* Long Lava	12N03	105Z60	12N02	105Z61	—	—	—	—

Gas Lens

Electrode Size — inch (mm)	.020 (0.5)	.040 (1.0)	1/16 (1.6)	3/32 (2.4)	1/8 (3.2)			
5 Insulator (required)	54N01	54N01	54N01	54N01	54N01			
2 Collet	10N21	10N22	10N23	10N24	10N25			
6 Gas Lens	45V29	45V24	45V25	45V26	45V27			
Nozzle Size — size # (inch)	4 (1/4)	5 (5/16)	6 (3/8)	7 (7/16)	8 (1/2)	10 (5/8)	12 (3/4)	Short
7 Alumina Gas Lens	54N18	54N17	54N16	54N15	54N14	—	—	54N19
* Long Gas Lens	—	54N17L	54N16L	54N15L	—	—	—	—

Large Diameter Gas Lens

Electrode Size — inch (mm)	.020 (0.5)	.040 (1.0)	1/16 (1.6)	3/32 (2.4)	1/8 (3.2)			
8 Insulator (required)	54N63	54N63	54N63	54N63	54N63			
2 Collet	10N21	10N22	10N23	10N24	10N25			
9 Large Diameter Gas Lens	45V0204	45V0204	45V116	45V64	995795			
Nozzle Size — size # (inch)	4 (1/4)	5 (5/16)	6 (3/8)	7 (7/16)	8 (1/2)	10 (5/8)	12 (3/4)	Short
10 Large Dia. Gas Lens	—	—	57N75	—	57N74	53N88	53N87	53N89
* Large Dia. Gas Lens-L	—	—	57N75L	—	57N74L	53N88L	53N87L	—
* Large Dia. Gas Lens-XL	—	—	57N75XL	—	57N74XL	53N88XL	53N87XL	—
* Large Dia. Gas Lens-XXL	—	—	57N75XXL	—	57N74XXL	53N88XXL	53N87XXL	—

Stubby Non-Gas Lens

Electrode Size — inch (mm)	.020 (0.5)	.040 (1.0)	1/16 (1.6)	3/32 (2.4)	1/8 (3.2)			
11 Insulator (required)	18CG20	18CG20	18CG20	18CG20	18CG20			
12 Stubby Collet	—	10N22S	10N23S	10N24S	10N25S			
13 Stubby Collet Body	17CB20	17CB20	17CB20	17CB20	17CB20			
Nozzle Size — size # (inch)	4 (1/4)	5 (5/16)	6 (3/8)	7 (7/16)	8 (1/2)	10 (5/8)	12 (3/4)	Short
14 Stubby Alumina	13N08	13N09	13N10	13N11	13N12	13N13	—	—

Stubby Gas Lens

Electrode Size — inch (mm)	.020 (0.5)	.040 (1.0)	1/16 (1.6)	3/32 (2.4)	1/8 (3.2)			
15 Insulator (required)	17GLG20	17GLG20	17GLG20	17GLG20	17GLG20			
12 Stubby Collet	—	10N22S	10N23S	10N24S	10N25S			
16 Stubby Gas Lens	—	17GL040	17GL116	17GL332	17GL18			
Nozzle Size — size # (inch)	4 (1/4)	5 (5/16)	6 (3/8)	7 (7/16)	8 (1/2)	10 (5/8)	12 (3/4)	Short
17 Alumina Gas Lens	53N58	53N59	53N60	53N61	53N61S	—	—	—

Back Caps

18 Short 57Y04	19 Medium 300M	20 Long 57Y02
----------------	----------------	---------------

*Not shown.

Tungsten

A Line of Premium Tungsten for the Most Demanding TIG Welding Applications!

Available in four types and industry-standard diameters, our premium line of Weldcraft® tungsten electrodes has undergone rigorous testing to ensure the highest quality and durability. Color-coded packages include ten seven-inch (175 mm) tungsten electrodes.

Note: Refer to manufacturer MSDS sheets for proper preparation and safety. Use proper ventilation/capture during preparation. Refer to manufacturer warning regarding ventilation.



Type	Diameter in. (mm)	Part #	Type	Diameter in. (mm)	Part #
2% Ceriated (EWCe-2)			Pure (EWP)		
Performs well in DC welding and arc starting at low-current settings, and offers excellent performance in AC processes.	0.040 (1.0)	WC040X7	Forms a clean, balled end when heated and provides good arc stability for AC welding with a balanced or unbalanced squarewave or sine wave.	0.040 (1.0)	—
	1/16 (1.6)	WC116X7		1/16 (1.6)	WP116X7
	3/32 (2.4)	WC332X7		3/32 (2.4)	WP332X7
	1/8 (3.2)	WC018X7		1/8 (3.2)	WP018X7
	5/32 (4.0)	WC532X7		5/32 (4.0)	—
2% Lanthanated (EWLa-2)			Rare Earth (EWG)		
Provides excellent arc starting, arc stability and re-ignition, and less tip erosion in AC or DC welding. Can substitute for 2% Thoriated.	0.040 (1.0)	WL2040X7	Combines the best of all alloying elements, and provides excellent arc stability in AC or DC welding.	0.040 (1.0)	—
	1/16 (1.6)	WL2116X7		1/16 (1.6)	WG116X7
	3/32 (2.4)	WL2332X7		3/32 (2.4)	WG332X7
	1/8 (3.2)	WL2018X7		1/8 (3.2)	WG018X7
	5/32 (4.0)	WL2532X7		5/32 (4.0)	—

Genuine Miller® Accessories



Wireless Remote Foot Control #300 429
For remote current and contactor control.

Receiver plugs directly into the 14-pin receptacle of Miller machine. 90-foot (27.4 m) operating range.



Wireless Remote Hand Control #300 430
For remote current and contactor control. Receiver plugs directly into the 14-pin receptacle of Miller machine.

300-foot (91.4 m) operating range.



RCCS-14 Remote Contactor and Current Control #043 688

North/south rotary-motion fingertip control fastens to TIG torch using two Velcro® straps. Includes 26.5-foot (8 m) control cord and 14-pin plug.



RCC-14 Remote Contactor and Current Control #151 086

East/west rotary-motion fingertip control fastens to TIG torch using two Velcro® straps. Includes 26.5-foot (8 m) cord and 14-pin plug.



Cable Covers

#WC-3-10 10 ft. (3 m)

#WC-3-22 22 ft. (6.7 m)

Extension Kit

#EK-2-25-R 25 ft. (7.6 m), rubber



#AK2C Accessory Kit

Includes one short back cap, three collets (one collet per size: .040, 1/16, 3/32), three collet bodies (one collet body per size: .040, 1/16, 3/32), three alumina nozzles (one nozzle per size: 4, 5, 6), and three 7-inch 2% ceriated tungsten electrodes (one electrode per size: .040, 1/16, 3/32).



#AK-150MFC Accessory Kit

Allows welding operators to customize their standard A-150 (WP-17) or A-125 (WP-9) TIG torch for their specific application. Kit converts into 28 different torch styles while using the A-150 and A-125 existing cable. Features collets, collet bodies, nozzles, torch heads, handle and more.



MillerWelds.com



© 2013 Miller Electric Mfg. Co.